

Field Inlet



Maintaining your field inlet, or grated inlet, should be done periodically and can usually be performed with common tools.

Your field inlet is the last part of your stormwater facility to trap sediment and pollutants. This helps protect water quality by keeping sediment and pollutants out of the storm sewer system, which usually drains directly to nearby streams.

Where to find it:

Field inlets are usually near the end of a stormwater facility. Look for a large metal grate surrounded by grass.

Before:

This field inlet is covered with debris and full of sediment.



When to maintain it:

Maintain in late spring and late fall, after leaves have fallen and the weather is dry.

After:

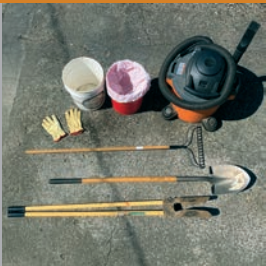
This field inlet is clear of debris and sediment was removed.



PRIVATE STORMWATER FACILITY MAINTENANCE

What you'll need:

- work gloves
- buckets lined with trash bags
- rake
- post-hole digger, shovel and/or wet-dry vacuum



Step 1: Remove surrounding vegetation, if necessary. Clear debris from the grate.



Step 2: Remove grate using proper lifting technique and set aside. CAUTION - grate is heavy.



Step 3: Use a shovel, post-hole digger or wet-dry vacuum to remove sediment.



Step 4: Reinstall grate, bag sediment and dispose in the trash. DO NOT put in yard waste cart or compost.



Find a list of contractors: www.stormwaterpartners.com/contractors

Notes: _____

