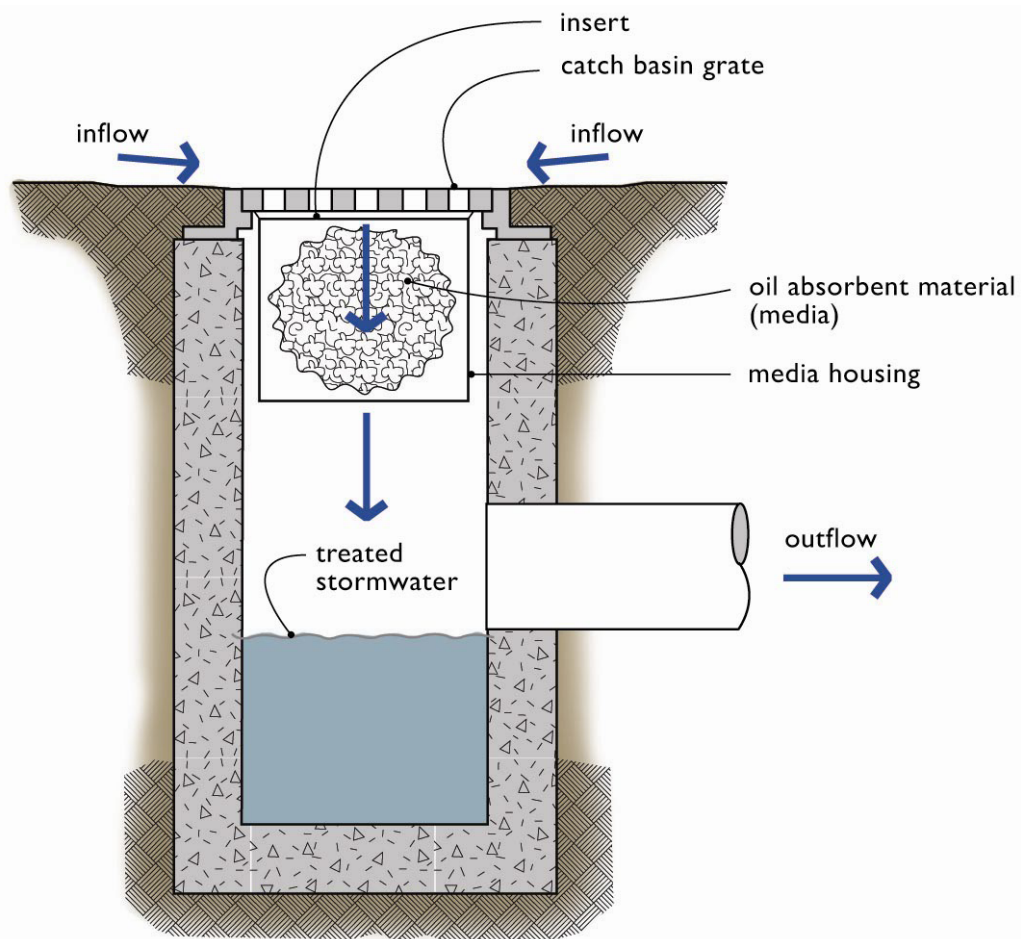


Catch Basin Insert

Catch basin inserts are used to trap sediment and oil entering catch basins. Most involve some type of filter media and oil-absorbent pads. Filters avoid flooding by overflowing when they become clogged or when there are high storm flows.

Catch basin inserts typically consist of the following components:

- A structure (screened box, brackets, etc.) which contains a pollutant removal medium
- A means of suspending the structure in a catch basin
- A filter medium such as sand, carbon, fabric, etc.
- A primary inlet and outlet for the stormwater
- A secondary outlet for bypassing flows that exceed design flow



Key Operations and Maintenance Considerations

- Catch basin inserts are proprietary; refer to the manufacturer’s instructions for inspection and maintenance.
- Some catch basin inserts do not require specialized tools and can be removed and replaced by hand.
- See Catch Basins for additional considerations.

Catch Basin Insert			
Drainage System Feature	Potential Defect	Conditions When Maintenance Is Needed	Minimum Performance Standard
General	Sediment Accumulation	When sediment forms a cap over the insert media of the insert and/or unit.	No sediment cap on the insert media and its unit.
	Trash and Debris Accumulation	Trash and debris accumulates on insert unit creating a blockage/restriction.	Trash and debris removed from insert unit. Runoff freely flows into catch basin.
	Media Insert Not Removing Oil	Effluent water from media insert has a visible sheen.	Effluent water from media insert is free of oils and has no visible sheen.
	Media Insert Water Saturated	Catch basin insert is saturated with water and no longer has the capacity to absorb.	Media insert has been replaced.
	Media Insert Oil Saturated	Media oil saturated due to petroleum spill that drains into catch basin.	Media insert has been replaced.
	Media Insert Use Beyond Normal Product Life	Media has been used beyond the typical average life of media insert product.	Media removed and replaced at regular intervals (frequency depending on insert product).